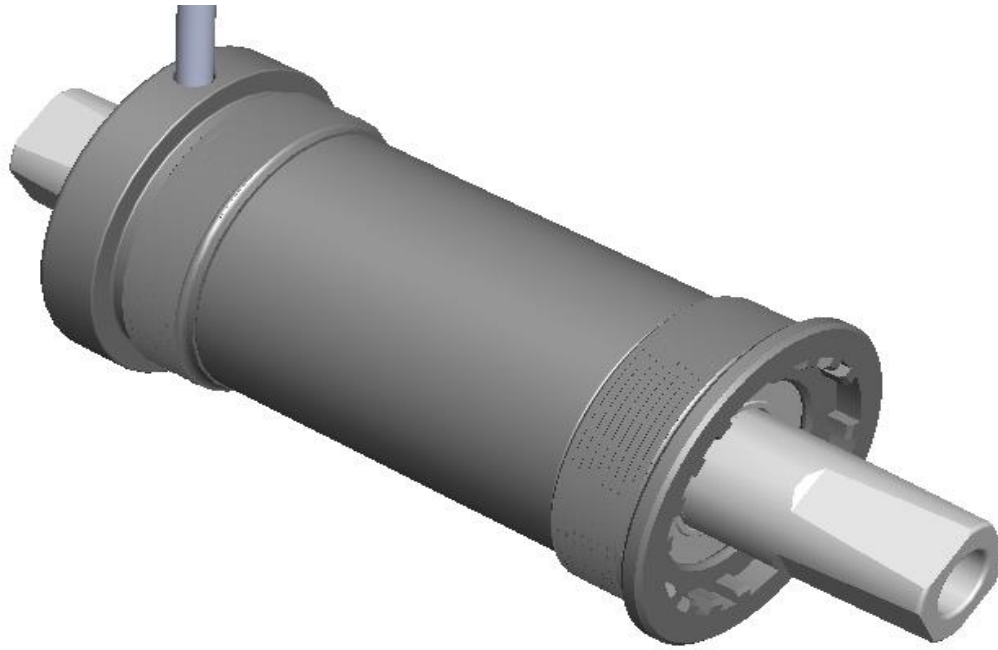
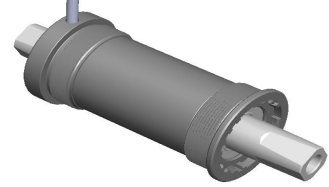


PUJAM—BB Dual Side Torque Sensor



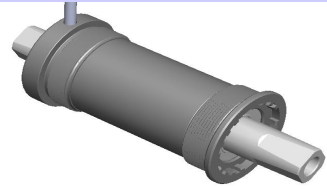
PUJAM—BB Dual Side Torque Sensor



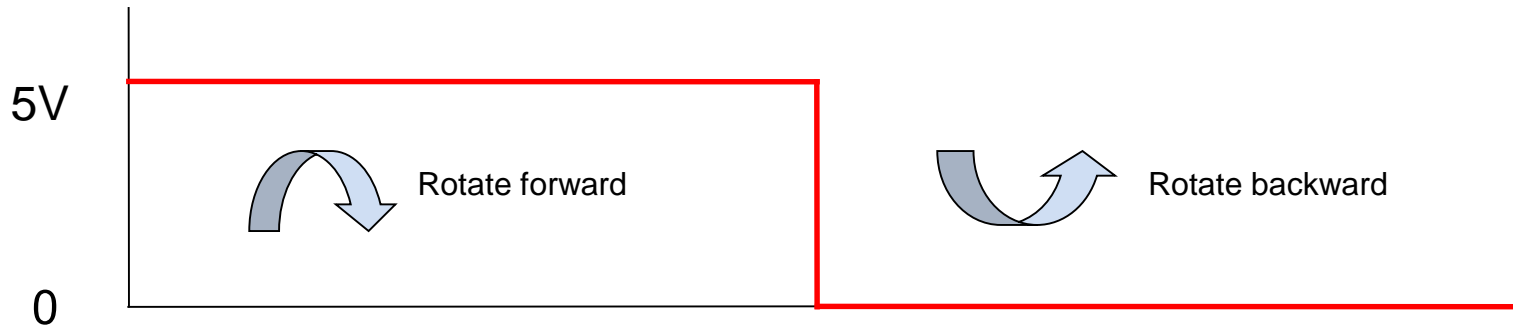
1. Technical Data:

No.	Item	Parameter	Unit
1	Input Voltage	5(± 0.05)	V _{DC}
2	Input Current	<60	mA
3	Max output power	<300	mW
4	Reference Voltage V ₀	1.5 (± 0.05)	V
5	Zero drift	@ (-20° C +50° C) V ₀ ± 0.05	V
6	Torque output sensitivity	14.7	mV/N.M
7	Speed sensor	32	pulses/R
8	Direction sensor	Rotate forward output high electrical level (5)	V
		Rotate backward output low electrical level (0)	V
9	Length	127.5mm 124.5mm 122.5mm 116mm 115mm,special size accept customize	MM
10	Working temperature	+50 / -20	° C
11	storage temperature	+55 / -25	° C

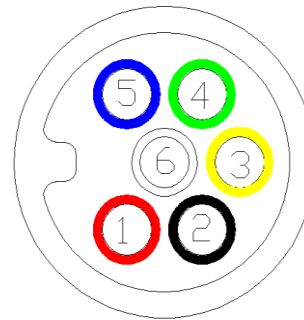
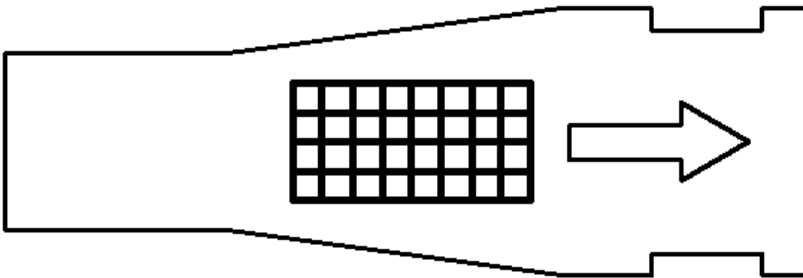
PUJAM—BB Dual Side Torque Sensor



3.Direction sensor output waveform diagram

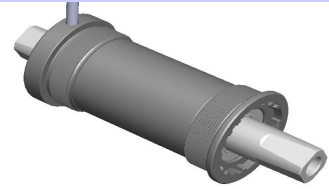


4. The torque output terminal PIN definition

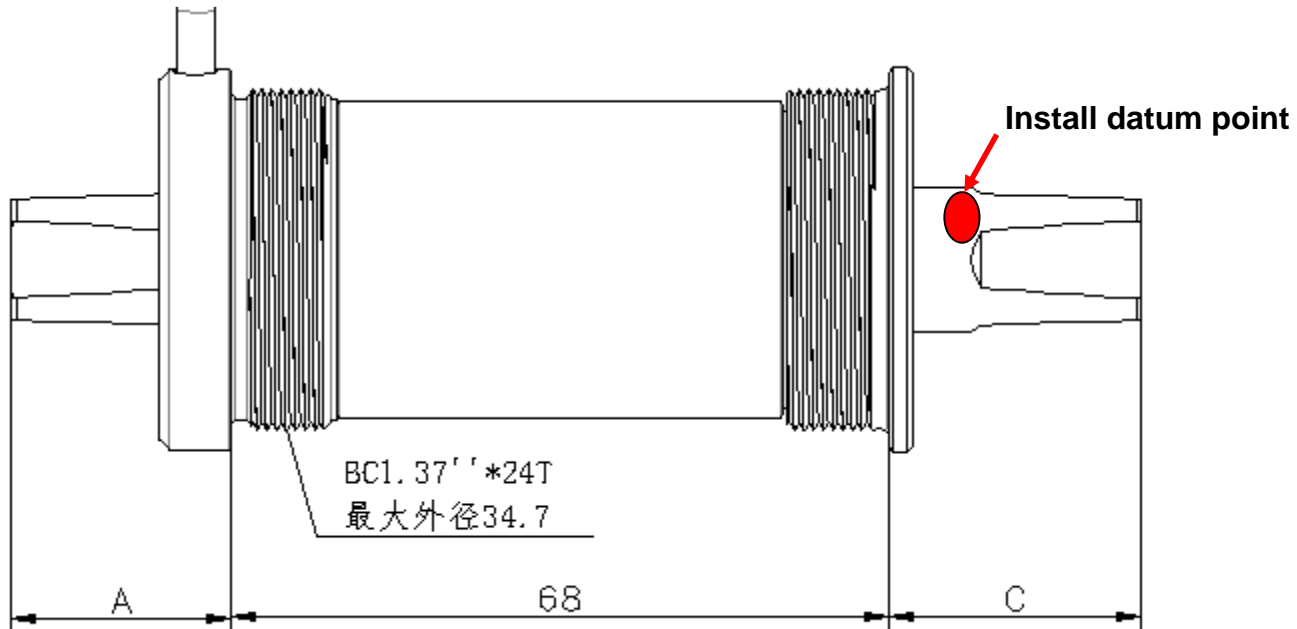


1. (red) power(+): 5v
2. (black) power ground (-)
3. (yellow) direction signal
4. (green) speed signal
5. (blue) NC
6. (white) torque signal

PUJAM—BB Dual Side Torque Sensor



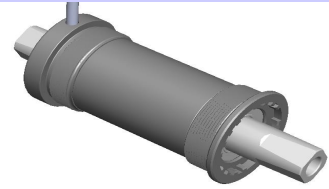
5.Torque sensor structure drawing:



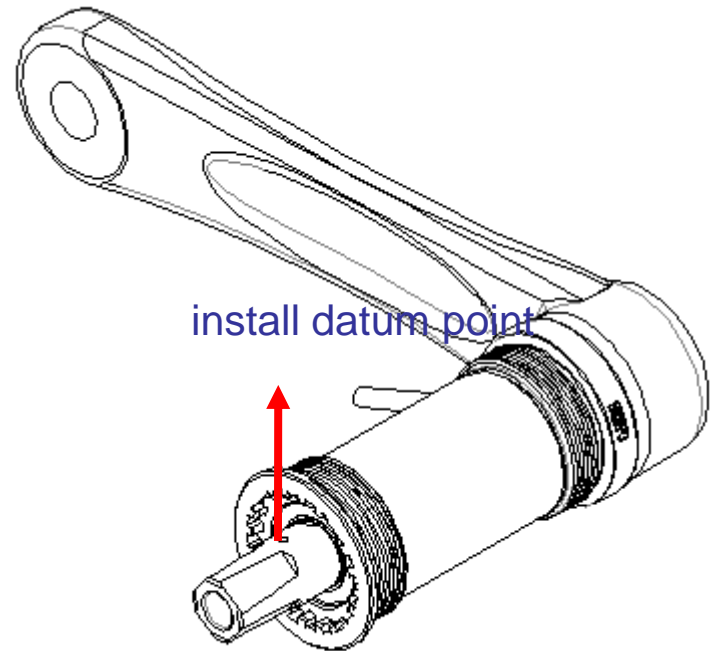
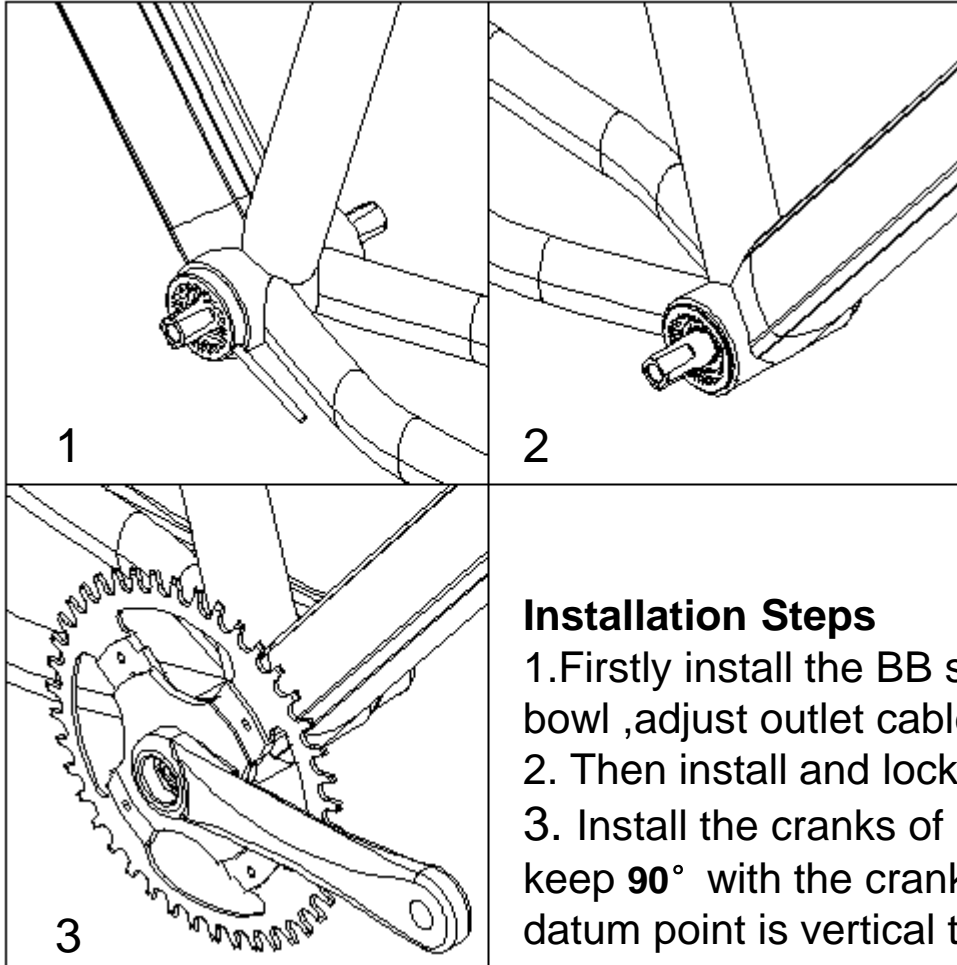
Different Length is optional

L	127.5	124.5	122.5	116	115
A	27	27	26.5	22.5	23
C	32.5	29.5	28	25.5	24

PUJAM—BB Dual Side Torque Sensor



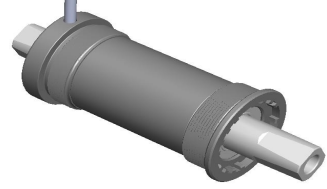
6. Installation Steps



Installation Steps

1. Firstly install the BB sensor from left side, then lock the left tooth bowl, adjust outlet cable to a suitable position.
2. Then install and lock tight the BB sensor right tooth bowl.
3. Install the cranks of both side, make sure install datum point is keep 90° with the crank, crank keep parallel with ground, ensure datum point is vertical to the ground

PUJAM—BB Dual Side Torque Sensor



7.Marks

1.This new version of torque,power is strictly controlled in the range of 5 v + / - 0.05, the power ripple < 100 mv, if beyond the scope of above,may cause torque sensor damage or torque static values appeared deviation.

2.This new version torque sensor power consumption is larger, 5 v power supply module,power supply capacity should not less than 0.5 W, it means the current should not <100 mA,if less than 100mA,probably will let torque can not work normally.

8.Contact:

Tel: 017620022692 Mail: info@trikefactory.de Attn: Ms Hoppe